

# Pop-Facts Demographics - Pop-Facts Household Quick Facts

## Title Page

**Data Version:** 2018 Feb (Internal)

**Report Generation Method:** Single

**Analysis Area:** 1789 STATE ST, SAN DIEGO, CA, 92101-2530

**Reporting Detail:** As Selected

**Include Map:** Yes

**Include Labels:** Yes

**Map Reporting Detail:** As Selected

**Base Map Style:** Claritas Map

**Subtotal Method:** None

**Include Charts:** Yes

**Analysis Area Detail:** No

### Report Sections:

Pop-Facts Summary

Pop-Facts Household Quick Facts

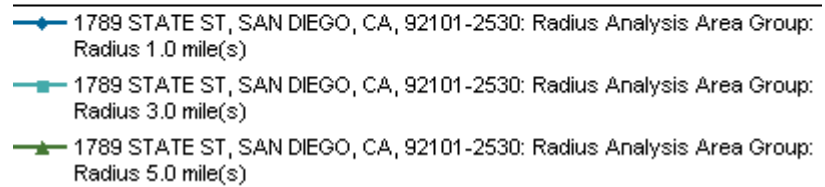
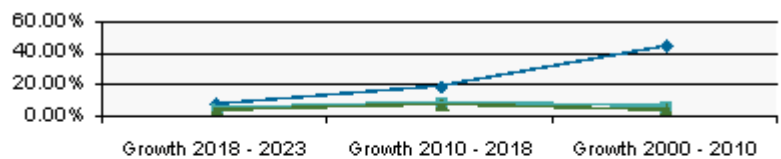
## Pop-Facts Demographics - Pop-Facts Household Quick Facts

Description	1789 STATE ST, SAN DIEGO, CA, 92101-2530: Radius Analysis Area Group: Radius 1.0 mile(s)		1789 STATE ST, SAN DIEGO, CA, 92101-2530: Radius Analysis Area Group: Radius 3.0 mile(s)		1789 STATE ST, SAN DIEGO, CA, 92101-2530: Radius Analysis Area Group: Radius 5.0 mile(s)	
	Total	%	Total	%	Total	%

### Pop-Facts Summary

#### Population

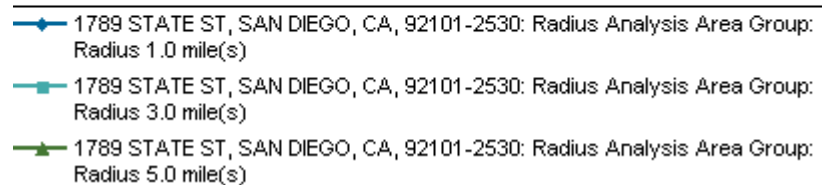
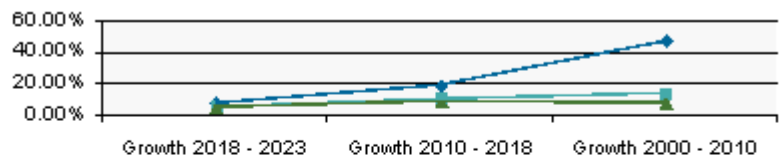
2023 Projection	38,179	194,036	507,659
2018 Estimate	35,486	185,434	488,261
2010 Census	29,911	170,244	455,072
2000 Census	20,732	160,452	437,088



Growth 2018 - 2023	7.59%	4.64%	3.97%
Growth 2010 - 2018	18.64%	8.92%	7.29%
Growth 2000 - 2010	44.27%	6.10%	4.11%

#### Households

2023 Projection	21,630	92,232	199,230
2018 Estimate	20,043	87,578	190,343
2010 Census	16,895	79,353	175,093
2000 Census	11,497	70,091	163,168



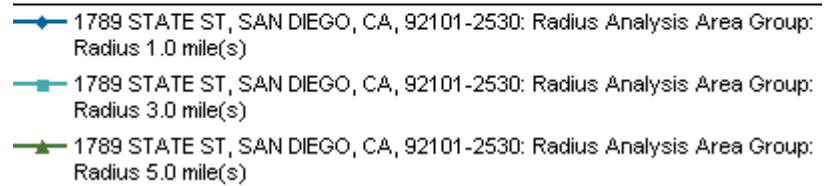
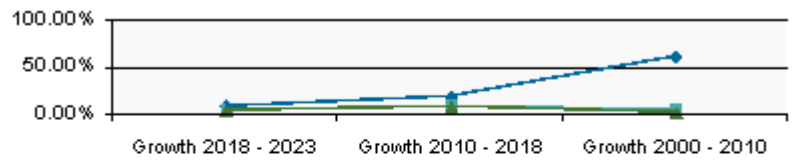
Growth 2018 - 2023	7.91%	5.31%	4.67%
Growth 2010 - 2018	18.63%	10.37%	8.71%

## Pop-Facts Demographics - Pop-Facts Household Quick Facts

Description	1789 STATE ST, SAN DIEGO, CA, 92101-2530: Radius Analysis Area Group: Radius 1.0 mile(s)		1789 STATE ST, SAN DIEGO, CA, 92101-2530: Radius Analysis Area Group: Radius 3.0 mile(s)		1789 STATE ST, SAN DIEGO, CA, 92101-2530: Radius Analysis Area Group: Radius 5.0 mile(s)	
	Total	%	Total	%	Total	%
Growth 2000 - 2010		46.95%		13.21%		7.31%

### Family Households

2023 Projection	5,044	33,339	95,761
2018 Estimate	4,675	31,833	91,907
2010 Census	3,937	29,295	85,652
2000 Census	2,447	28,033	84,263



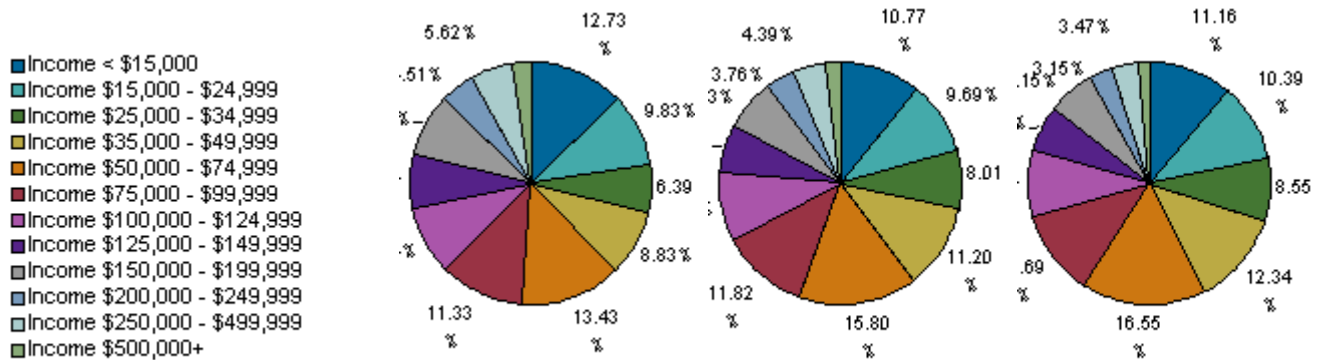
Growth 2018 - 2023		7.89%	4.73%	4.19%
Growth 2010 - 2018		18.76%	8.66%	7.30%
Growth 2000 - 2010		60.86%	4.50%	1.65%

# Pop-Facts Demographics - Pop-Facts Household Quick Facts

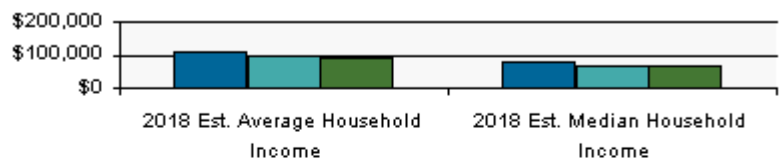
Description	1789 STATE ST, SAN DIEGO, CA, 92101-2530: Radius Analysis Area Group: Radius 1.0 mile(s)		1789 STATE ST, SAN DIEGO, CA, 92101-2530: Radius Analysis Area Group: Radius 3.0 mile(s)		1789 STATE ST, SAN DIEGO, CA, 92101-2530: Radius Analysis Area Group: Radius 5.0 mile(s)	
	Total	%	Total	%	Total	%

## Pop-Facts Household Quick Facts

2018 Est. Households by Household Income	20,043	87,578	190,343
--	--------	--------	---------



Income Bracket	1.0 Mile Radius	3.0 Mile Radius	5.0 Mile Radius
Income < \$15,000	2,551 (12.73%)	9,430 (10.77%)	21,241 (11.16%)
Income \$15,000 - \$24,999	1,969 (9.83%)	8,485 (9.69%)	19,780 (10.39%)
Income \$25,000 - \$34,999	1,281 (6.39%)	7,013 (8.01%)	16,280 (8.55%)
Income \$35,000 - \$49,999	1,770 (8.83%)	9,808 (11.20%)	23,492 (12.34%)
Income \$50,000 - \$74,999	2,691 (13.43%)	13,839 (15.80%)	31,495 (16.55%)
Income \$75,000 - \$99,999	2,271 (11.33%)	10,352 (11.82%)	22,246 (11.69%)
Income \$100,000 - \$124,999	1,853 (9.24%)	8,030 (9.17%)	16,750 (8.80%)
Income \$125,000 - \$149,999	1,434 (7.15%)	5,608 (6.40%)	11,723 (6.16%)
Income \$150,000 - \$199,999	1,688 (8.42%)	6,070 (6.93%)	11,713 (6.15%)
Income \$200,000 - \$249,999	904 (4.51%)	3,297 (3.76%)	5,992 (3.15%)
Income \$250,000 - \$499,999	1,126 (5.62%)	3,843 (4.39%)	6,599 (3.47%)
Income \$500,000+	504 (2.52%)	1,802 (2.06%)	3,033 (1.59%)



■ 1789 STATE ST, SAN DIEGO, CA, 92101-2530: Radius Analysis Area Group: Radius 1.0 mile(s)
■ 1789 STATE ST, SAN DIEGO, CA, 92101-2530: Radius Analysis Area Group: Radius 3.0 mile(s)
■ 1789 STATE ST, SAN DIEGO, CA, 92101-2530: Radius Analysis Area Group: Radius 5.0 mile(s)

2018 Est. Average Household Income	\$105,638	\$96,580	\$88,431
2018 Est. Median Household Income	\$72,769	\$66,353	\$61,414

## Pop-Facts Demographics - Pop-Facts Household Quick Facts

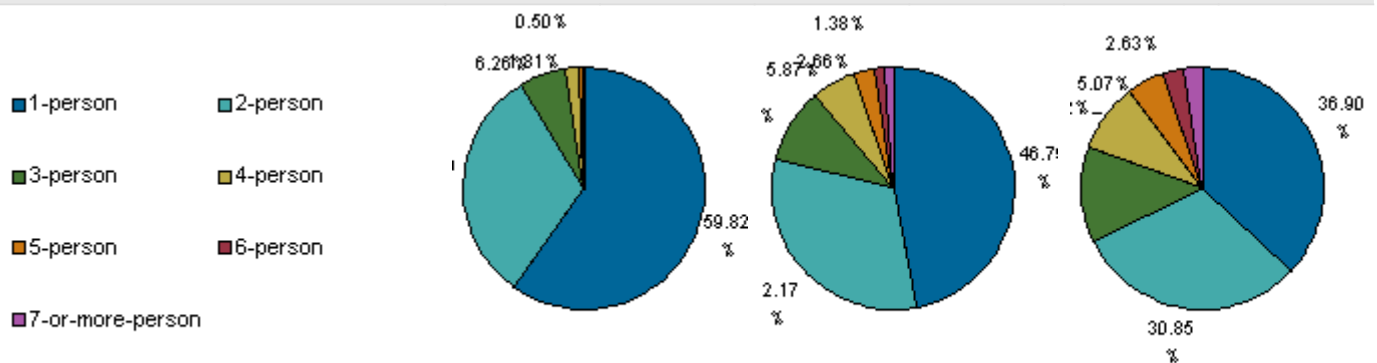
Description	1789 STATE ST, SAN DIEGO, CA, 92101-2530: Radius Analysis Area Group: Radius 1.0 mile(s)		1789 STATE ST, SAN DIEGO, CA, 92101-2530: Radius Analysis Area Group: Radius 3.0 mile(s)		1789 STATE ST, SAN DIEGO, CA, 92101-2530: Radius Analysis Area Group: Radius 5.0 mile(s)	
	Total	%	Total	%	Total	%

### 2018 Median HH Inc. by Single-Classification Race

	1.0 mile(s)	3.0 mile(s)	5.0 mile(s)
White Alone	\$81,001	\$74,943	\$71,323
Black or African American Alone	\$42,119	\$40,136	\$41,902
American Indian and Alaska Native Alone	\$42,786	\$43,262	\$46,469
Asian Alone	\$42,630	\$63,320	\$59,844
Native Hawaiian and Other Pacific Islander Alone	\$50,477	\$63,494	\$59,602
Some Other Race Alone	\$37,979	\$35,705	\$36,620
Two or More Races	\$81,080	\$61,248	\$60,484
Hispanic or Latino	\$62,624	\$46,125	\$43,378
Not Hispanic or Latino	\$73,773	\$72,330	\$69,825

2018 Est. Households by Household Type	20,043	87,578	190,343			
Family Households	4,675	23.32%	31,833	36.35%	91,907	48.29%
Nonfamily Households	15,368	76.68%	55,745	63.65%	98,435	51.71%
<b>2018 Est. Group Quarters Population</b>	<b>4,898</b>	<b>13,663</b>	<b>38,661</b>			

### 2018 Est. Households by Household Size



Household Size	1.0 mile(s)	3.0 mile(s)	5.0 mile(s)			
1-person	11,990	59.82%	40,976	46.79%	70,228	36.90%
2-person	6,291	31.39%	28,171	32.17%	58,722	30.85%
3-person	1,254	6.26%	8,660	9.89%	24,382	12.81%
4-person	363	1.81%	5,138	5.87%	17,364	9.12%
5-person	100	0.50%	2,327	2.66%	9,656	5.07%
6-person	29	0.14%	1,209	1.38%	4,999	2.63%
7-or-more-person	17	0.09%	1,096	1.25%	4,993	2.62%

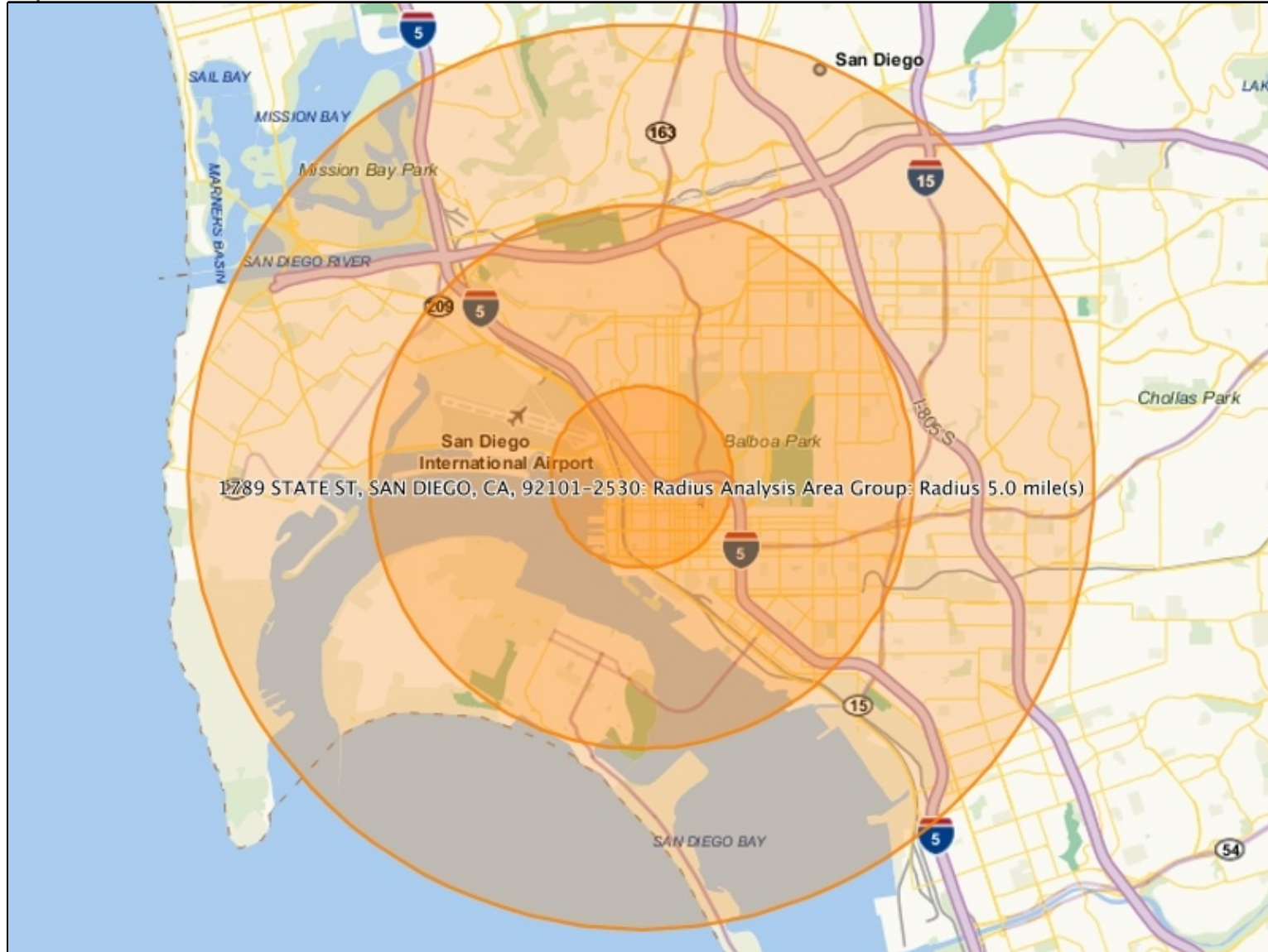
## Pop-Facts Demographics - Pop-Facts Household Quick Facts

Description	1789 STATE ST, SAN DIEGO, CA, 92101-2530: Radius Analysis Area Group: Radius 1.0 mile(s)		1789 STATE ST, SAN DIEGO, CA, 92101-2530: Radius Analysis Area Group: Radius 3.0 mile(s)		1789 STATE ST, SAN DIEGO, CA, 92101-2530: Radius Analysis Area Group: Radius 5.0 mile(s)	
	Total	%	Total	%	Total	%
2018 Est. Average Household Size	1.53		1.96		2.36	

2018 Est. HHs by Type by Presence of Own Children	4,675		31,833		91,907	
Married-Couple Family, own children	602	12.88%	8,066	25.34%	26,739	29.09%
Married-Couple Family, no own children	3,179	67.99%	13,811	43.39%	33,387	36.33%
Male Householder, own children	116	2.48%	1,371	4.31%	4,323	4.70%
Male Householder, no own children	218	4.66%	1,709	5.37%	5,275	5.74%
Female Householder, own children	220	4.71%	3,673	11.54%	12,191	13.26%
Female Householder, no own children	340	7.28%	3,203	10.06%	9,992	10.87%

# Pop-Facts Demographics - Pop-Facts Household Quick Facts

Map



**1789 STATE ST, SAN DIEGO, CA, 92101-2530**

- Radius 1.0 mile(s)
- Radius 3.0 mile(s)
- Radius 5.0 mile(s)